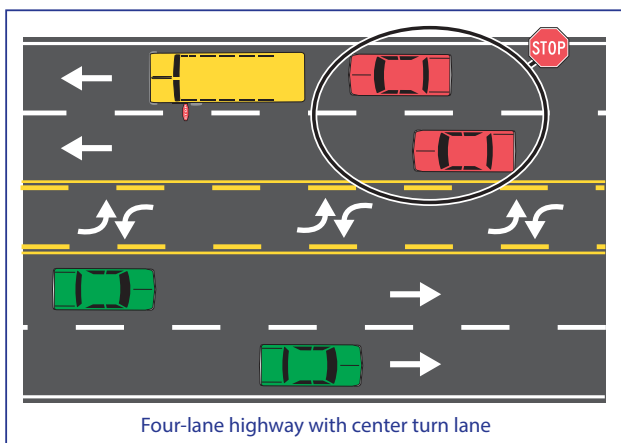
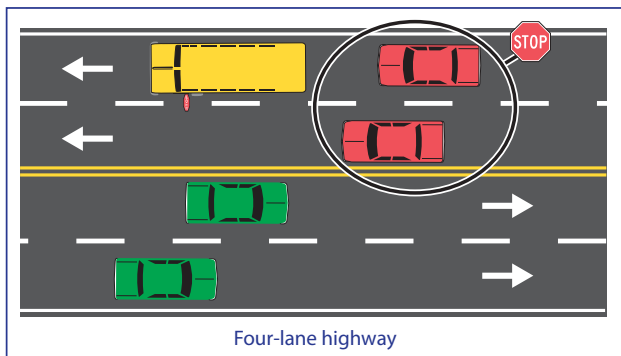


## Scenario 2: You are traveling on a road with two or more lanes in each direction

**Approaching the bus from the rear:** When approaching from the rear, the rules are the same as for a two- or three-lane road. When you see flashing red or amber warning lights, you are not permitted to pass the school bus and should be prepared to stop. Stop behind the school bus when the school bus stops and its stop arm is extended. Stop no closer than 15 feet from the rear of the bus, and remain stopped until the stop arm is retracted and school bus starts moving again. Proceed with caution.

**Meeting the bus from the front:** When meeting the bus in one of the opposite two lanes (or more), you **do not** need to stop, even if the bus has stopped with lights flashing and stop arm out. The bus is not permitted to load or unload children who must cross this type of roadway, unless there are official traffic control devices or law enforcement present. **This is the only time you may pass a school bus that is stopped and has its stop arm extended.**



For more information, visit:  
[www.iowadot.gov/schoolbus](http://www.iowadot.gov/schoolbus)

Federal and state laws prohibit employment and/or public accommodation discrimination on the basis of age, color, creed, disability, gender identity, national origin, pregnancy, race, religion, sex, sexual orientation or veteran's status. If you believe you have been discriminated against, please contact the Iowa Civil Rights Commission at 800-457-4416 or Iowa Department of Transportation's affirmative action officer. If you need accommodations because of a disability to access the Iowa Department of Transportation's services, contact the agency's affirmative action officer at 800-262-0003.

MM567 09/24/2012



Iowa Department of Transportation  
800 Lincoln Way • Ames, Iowa 50010

# Keep our kids safe

## DO NOT PASS A STOPPED SCHOOL BUS



## Kadyn's Law and increased penalties for violation

In March 2012, Iowa Gov. Terry Branstad signed into law the "Keep Aware Driving — Youth Need School Safety Act," also known as "Kadyn's Law." Kadyn Halverson was just seven years old when she was struck and killed by a motorist while attempting to cross the road to board a school bus.



*Kadyn Halverson*

Kadyn's Law includes several provisions aimed at reducing school bus-related injuries and fatalities: expanded school bus safety education; a school bus safety study; and increased penalties for failure to obey school bus warning lights and stop signal arms.

For a first offense, the fine is at least \$250 and could be as high as \$675. The court may order imprisonment of up to 30 days in lieu of or in addition to the fine. A conviction also means a 30-day driver's license suspension.

A conviction for a second offense of the law will result in a fine of at least \$315 and as much as \$1,875, as well as a 90-day driver's license suspension. The court may also order imprisonment up to one year.

A third or subsequent offense will result in a fine of at least \$315 and as much as \$1,875, a 180-day driver's license suspension and possibly imprisonment up to one year.

An additional fine of \$500 will be imposed for any offense causing serious injury to another person. The court may also order the Iowa Department of Transportation to suspend that person's driver's license for 90 days in lieu of or in addition to this fine.

Any offense causing death to another person will result in an additional fine of \$1,000. The court may also order the Iowa DOT to suspend that person's driver's license for 180 days in lieu of or in addition to the fine.

## Scenario 1: You are traveling on a two- or three-lane road

**Approaching the bus from the rear:** When you see flashing red or amber warning lights, you are not permitted to pass the school bus and should be prepared to stop. Stop behind the school bus when the school bus stops and the stop arm is extended. Stop no closer than 15 feet from the rear of the bus, and remain stopped until the stop arm is retracted and school bus starts moving again. Proceed with caution.

**Meeting the bus from the front:** When you see amber warning lights flashing you must slow your vehicle to no more than 20 mph and be prepared to stop. Stop in front of the school bus when the school bus stops and its stop arm is extended. Remain stopped until the stop arm is retracted. Proceed with caution.

